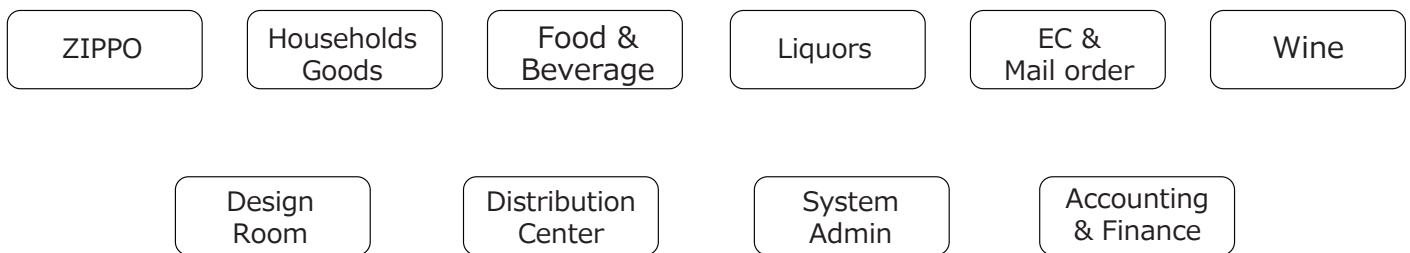
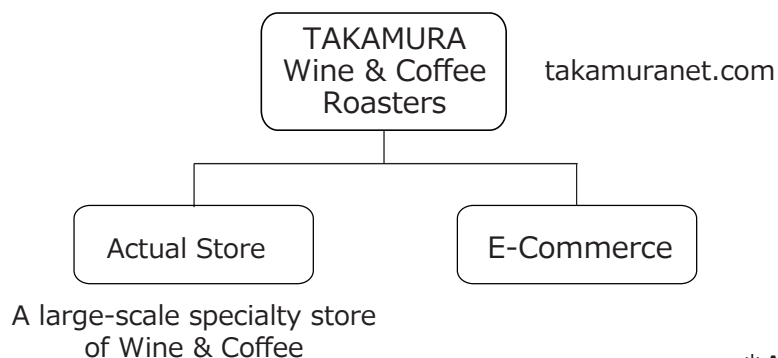


DIVISIONS OF COMPANY



GROUP COMPANY



*As of March 2018

COMPANY PROFILE

Founded	March 1938
Incorporated	August 24th 1949
Rep. Director	Kenji Matsu, President
Address	Head Office: 18-5, 1-Chome, Kyomachibori, Nishi-Ku, Osaka, 550-0003 Japan Tokyo Office: 10-7, 1-Chome, Higashi-Gotanda, Shinagawa-ku, Tokyo, 141-0022 Japan Distribution Center: 2-20, 2-Chome, Edobori, Nishi-Ku, Osaka, 550-0002 Japan
Capital	JPY 95,000,000
Group Company	TAKAMURA Wine & Coffee Roasters
Banks	MUFG Bank, Ltd. / Mizuho Bank, Ltd. / Sumitomo Mitsui Banking Corporation
Business Category	1. Importing & exporting of foods, alcoholic beverages and smoking equipments 2. Retailing trade such as E-Commerce etc.